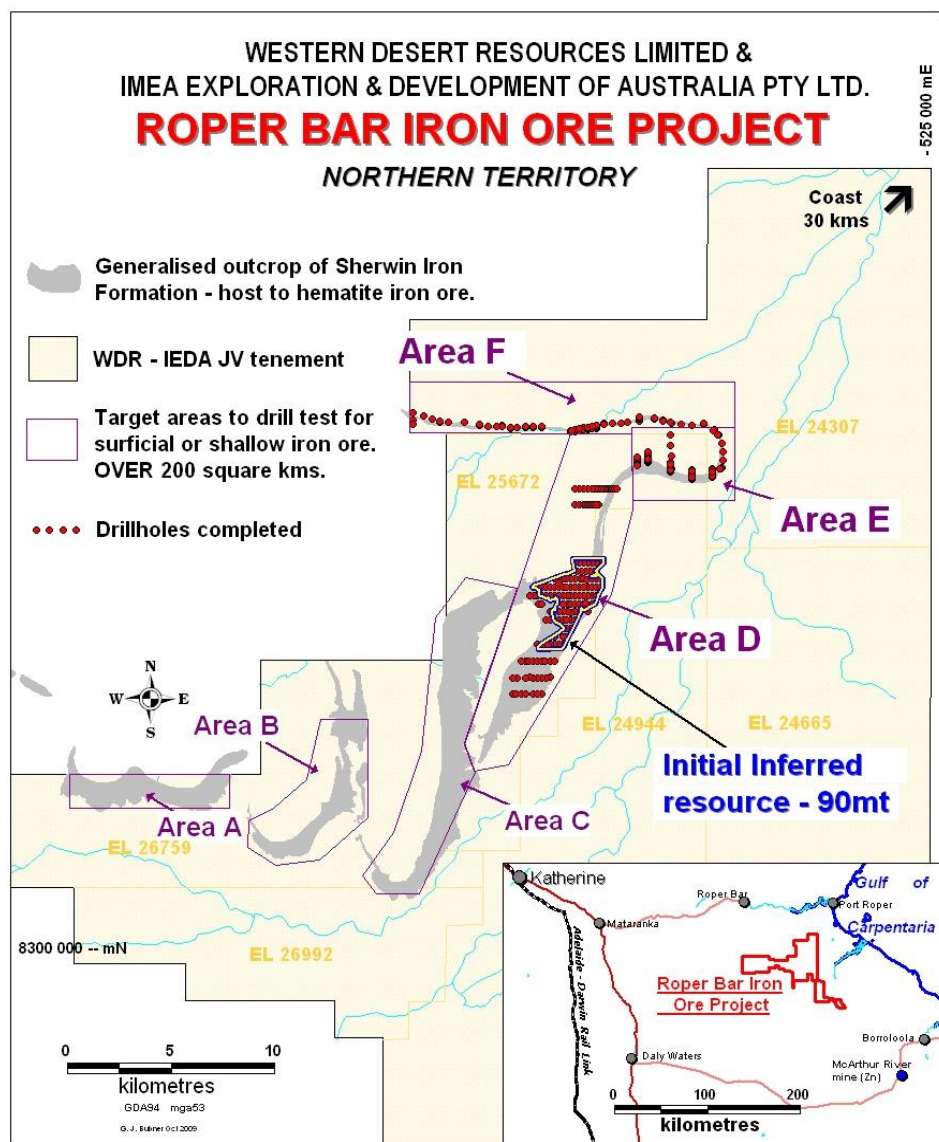


20th October, 2009.

Company Announcements Office,
ASX Securities Limited,
20, Bridge Street,
SYDNEY, NSW 2000

90 MILLION TONNE INAUGURAL JORC COMPLIANT MINERAL RESOURCE ESTIMATE - ROPER BAR (NT) IRON ORE PROJECT

- Area "D" Inferred Mineral Resource of 90 million tonnes hematitic ironstone at 37.2% Fe
- The resource is flat lying, close to the surface and open to the north
- The iron ore would be beneficiable by gravity methods
- The mineral resource contains low contaminants such as phosphorus and alumina
- Additional resource estimates for Area "F" & Area "E" commissioned.



Western Desert Resources Limited (ASX code “WDR”) and ITOCHU subsidiary, IMEA Exploration and Development of Australia Pty Ltd (IEDA) are pleased to announce the results of the mineral resource estimate for Area “D” within the Northern Territory Roper Bar iron ore project.

ROPER BAR PROJECT - AREA “D” RESOURCE ESTIMATE (30% Fe Lower Grade Cutoff)

ZONE	TONNES (Mt)	Fe (%)	SiO₂ (%)	P (%)	Al₂O₃ (%)	CaO (%)	S (%)	MnO (%)	LOI (%)
1	2.3	31.7	43.14	0.007	2.65	0.04	0.02	0.62	6.97
2	51.0	39.4	28.7	0.007	3.23	0.07	0.03	0.42	9.24
3	23.8	34.1	34.1	0.007	3.69	0.07	0.03	0.82	10.49
4	13.6	35.0	35.2	0.009	1.99	0.05	0.03	1.00	9.92
Total *	90.7	37.2	31.5	0.008	3.15	0.07	0.03	0.62	9.61

* Due to the effect of rounding, totals may not be able to be reproduced exactly from the data that appears in the body of the table.

The JORC Code compliant Inferred Mineral Resource consists of four zones ofoolitic hematitic ironstone, and contains 90 million tonnes @37.2%Fe, 31.5%SiO₂, 3.15% Al₂O₃, and <0.01%P at a lower cutoff grade of 30% Fe.

The resource estimate was carried out by AMC Consultants Pty Ltd who made the following comments in their report:

“AMC believes the project has considerable potential provided a saleable product can be produced through appropriate beneficiation methods.”

The Area D resource displays numerous positive attributes: it is laterally extensive, low in contaminants, flat lying, close to surface, and open to extension through further exploration. In addition, further drilling will allow more detailed definition of higher grade zones which could support exploitation at a higher grade than the current resource implies.”

The resource is open to the north where drilling carried out by the joint venture in 2008 showed that the Sherwin Ironstone Member contained significant hematite mineralisation (12m at 44% Fe from 58m in RBRC011) which was amenable to gravity beneficiation. The drill holes completed in 2008 are located about 3km north of the most northern part of the new resource.

The announced resource covers the portion of Area “D” north of 8314600N and is based on drilling carried out on lines spaced 400m apart with 200m interval between drillholes. The area to the south of 8314600N contains zones of near surface iron mineralisation however the wide drill spacing of 800m by 200m precludes a resource estimate at this time.

“This is a significant milestone for the Roper Bar project”, Managing Director Norm Gardner said. “More resource estimates from other areas of the project have been commissioned & we expect to build our resource position over the next 3 months”

For further information, contact
 Norm Gardner
 Managing director
 (08) 8177 8800
info@westerndesertresources.com.au

The information in this report that relates to Exploration Results is based on information compiled by John Fabray who is a member of the Australasian Institute of Mining and Metallurgy. Mr Fabray is a full time employee of Western Desert Resources Ltd and has sufficient experience relevant to the styles of mineralisation under consideration and to the subject matter of the report to qualify as a Competent Person as defined in the 2004 edition of the Australasian Code for the Reporting of Exploration Results, Mineral Resources and Ore Reserves (JORC code). Mr Fabray consents to the inclusion in the report of the matters based on his information in the form and context in which they occur.

The information in this statement that relates to Mineral Resources is based on information compiled by Sharron Sylvester who is a full-time employee of AMC Consultants Pty Ltd and a Member of the Australian Institute of Geoscientists and has sufficient experience that is relevant to the style of mineralisation and type of deposit under consideration to qualify as a Competent Person as defined in the JORC Code (2004). Sharron Sylvester consents to the inclusion of this information in the form and context in which it appears.

About Western Desert Resources Limited

Western Desert Resources (WDR) is an ASX listed Australian exploration company with a diversified portfolio of projects in Australia. WDR has identified advanced prospects in iron ore and gold.

Core projects are: the Roper Bar Iron Ore Project in the Northern Territory located close to the Roper River; and the Roper gold/copper project near Tennant Creek, also in the Northern Territory.

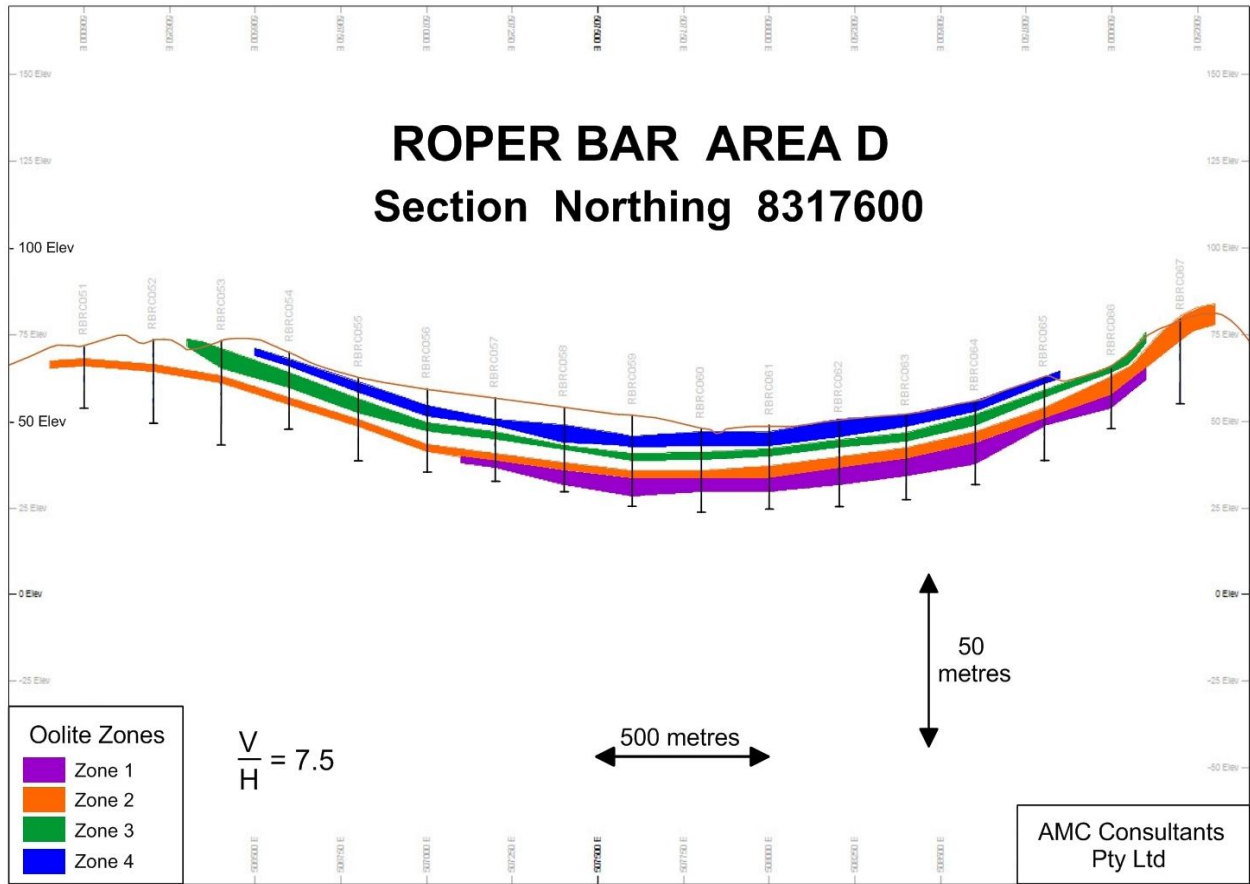


Figure 1: Resource East-West Cross Section 8317600N

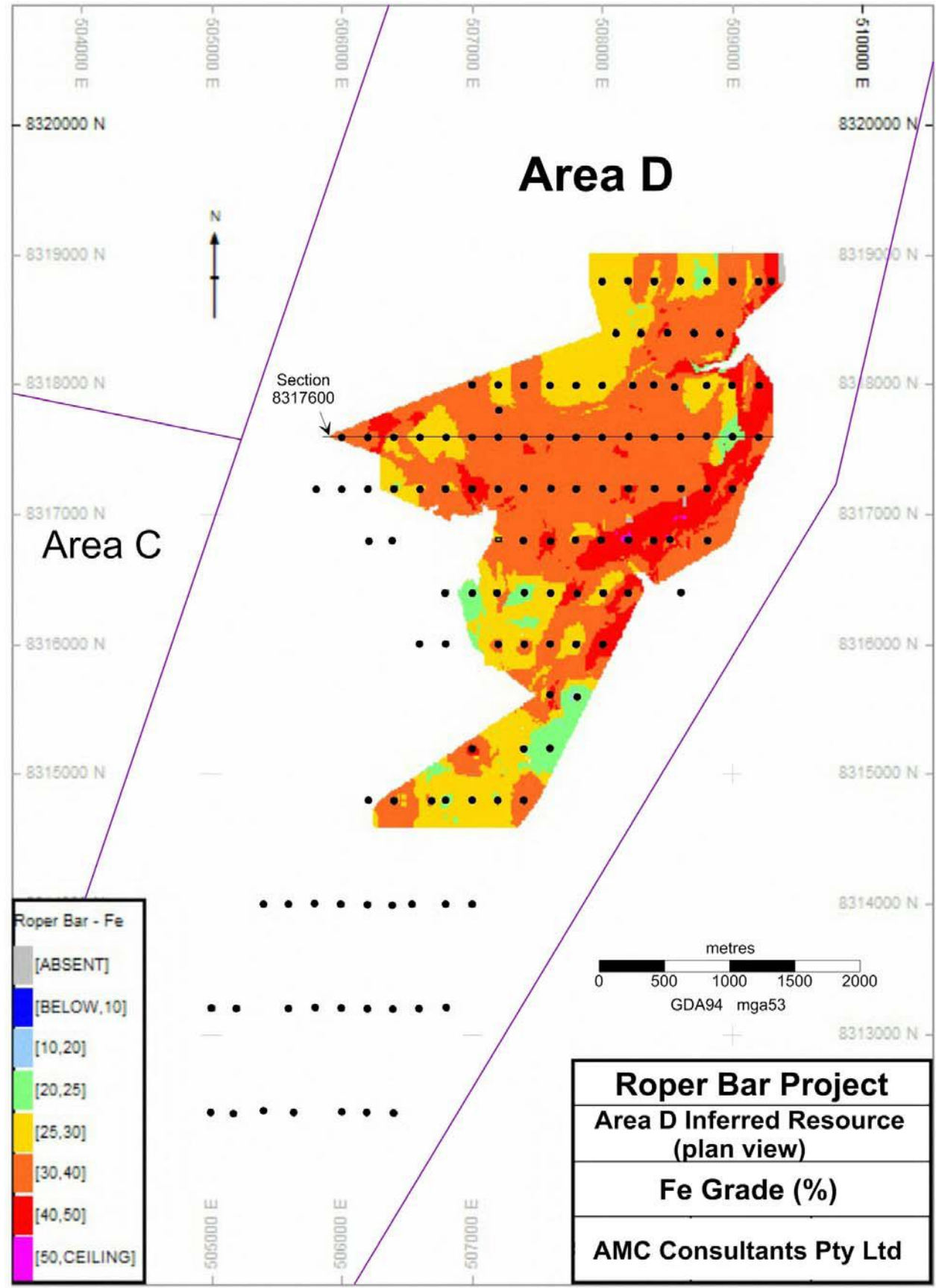


Figure 2: Area "D" Inferred Mineral Resource Map